

New items from our
product range.





Not yet in production: Bakelite in red.

The classic colours for Bakelite products have always been black, russet and white. But why not opt for a different colour? For design and study purposes, we have produced our tried and tested switch series in red, and we are thrilled with the result: an eye-catching item with added signalling effect. A practical interior design feature wherever light switches or plug sockets need to be easily visible and findable. Also recommended for all areas that can benefit from a touch of colour. **Available from the summer of 2016.**



A brand new addition to our product range is a Swiss version for our outlets.

Outlet Bakelite Swiss version

10A, AC 250V. Bakelite central insert. With spring clips.

Order no. **100940**

Outlet Duroplast Swiss version

10A, AC 250V. Duroplast central insert. With spring clips.

Order no. **100969**

Outlet Porcelain Swiss version

10A, AC 250V. Duroplast central insert. With spring clips.

Order no. **100873**



Note: For installation in DIN 49073-certified installation units.



produced a light switch with illuminated components containing – of course – no radioactive materials. The pigments integrated into these components charge up by absorbing light energy during the day, which they then emit as visible light when it is dark. This is a purely physical process, which guarantees long-term operation without any signs of wear. **Available from June 2016.**

Rocker button without symbol Bakelite

10 A, AC 250V. Bakelite central insert and compensator.

Order no. **100973**

Rocker button light Bakelite

10 A, AC 250V. Bakelite central insert and compensator.

Order no. **100974**

Rocker button bell Bakelite

10 A, AC 250V. Bakelite central insert and compensator.

Order no. **100975**

Rocker button door opener Bakelite

10 A, AC 250V. Bakelite central insert and compensator.

Order no. **100976**

Simply clever: Illuminated light switch.

New in our range of switches are illuminated buttons and an illuminated glass fitting made from forest glass (which we unfortunately cannot show in this brochure yet). In the past, illuminated light switches had been designed with a built-in glow lamp. For the first time, we have

Variety is the spice of life.

As an addition to our black Bakelite and white Duroplast series we offer new quadruple faceplates and system coverings.



Quadruple covering

For assembly of components with central insert and dimmer, data outlet, telephone outlet, antenna outlet and speaker socket. External size 228 x 82 mm.

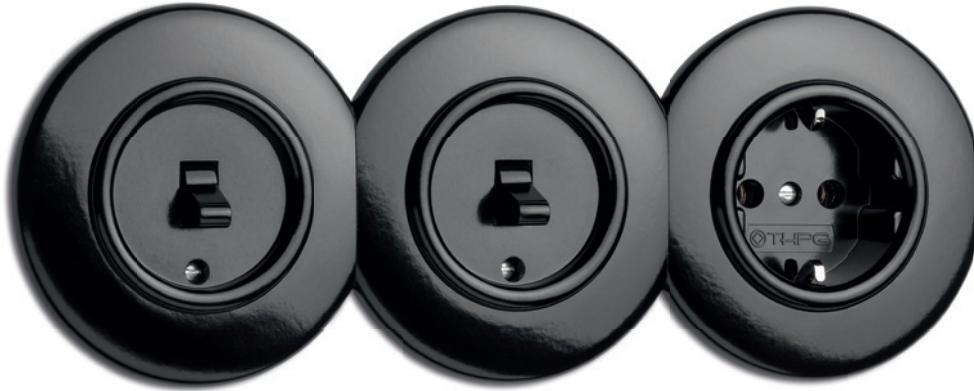
Thanks to our new coverings the possibilities to combine are endless and the design of multiple combinations with round coverings are possible.



Bakelite Order no. 173091



Duroplast Order no. 176424



External system covering

82 mm Ø. For assembly of all components with central insert excluding dimmer, data and telephone jack, antennae outlets and speaker wall sockets.

Bakelite Order no. 173092
Duroplast Order no. 176425

System covering waist

82 mm Ø. For assembly of all components with central insert excluding dimmer, data and telephone jack, antennae outlets and speaker wall sockets.

Bakelite Order no. 173093
Duroplast Order no. 176426

External system covering for dimmer

82 mm Ø. For assembly of dimmer, data and telephone jack, antennae outlets and speaker wall sockets.

Bakelite Order no. 173094
Duroplast Order no. 176427

System covering waist for dimmer

82 mm Ø. For assembly of dimmer, data and telephone jack, antennae outlets and speaker wall sockets.

Bakelite Order no. 173095
Duroplast Order no. 176428



Black and white

Created on request from the commercial property sector. Bakelite switch series, black with white components and vice versa. Here are a few examples of how our switch series can also be combined.



Note for all showed switches and outlets: Switches and power outlets are delivered without outside faceplates. They must be ordered separately. For more information please see our switches catalogue or visit us under www.thpg.com.



Combining style and function.

This protective contact adapter with double-pole switch (0 position = off, I position = on) enables devices and cables to be switched on and off without generating any electrical voltage. All devices with a "stand-by" function remain under electrical voltage even when they are in "sleep" mode and

not being used. The voltage can also continue flowing even when devices are switched off, preventing sensitive people from getting a good night's sleep or causing other disruptions. By activating the switch on the side of this adapter, you can disconnect the voltage supply both to the device and to the power cable. No installation is necessary – simply slot the adapter into the socket and connect the device's power cable to the adapter (a bedside lamp, floor lamp, razor, television, etc.).



Bakelite adapter for plug sockets

Black Bakelite. 230 V, 16 A, 50 Hz. Only suitable for alternating current. Ø 5 cm. Length 4.5 cm. Weight 54 g. Order no. 100477

Bakelite doorbell, black

Round doorbell made of black Bakelite with black or white pusher (low-voltage bell) with self-cleaning contact. Ø 5 cm, height 2 cm. Max. 24 V ~ (5mA – 1.5A / 24VA) / max. 24 V = (5mA – 1.0A / 12W).

Bakelite doorbell black Order no. 100880
Bakelite doorbell black with white pusher Order no. 100881



Bakelite cable switch, black

With regard to its functionality as well as how it looks and feels (it's almost as nice as holding a worry stone), this impeccable and attractive bolted switch is made of black Bakelite. The installation press button is available in three colours: black, red and white. Equipped with a textile cable, it provides every lamp with a special look and charm. 2 A, 250 V, 1 pole, equipped with a connection clamp for neutral and ground wiring. Suitable for a triple-wire cable, with strain relief clamps. Length 60 mm, height 23 mm (height including button: 27 mm), width 24 mm. Weight 40 g.



Cable switch with black button
Cable switch with white button
Cable switch with red button

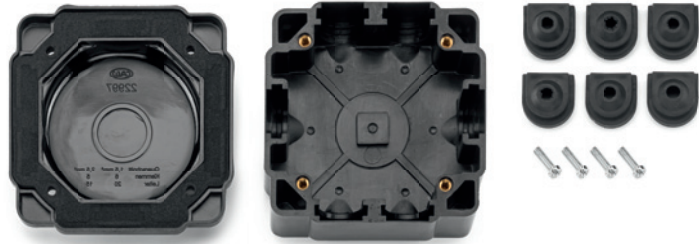
Order no. 100465
 Order no. 100446
 Order no. 100480



Bakelite junction box

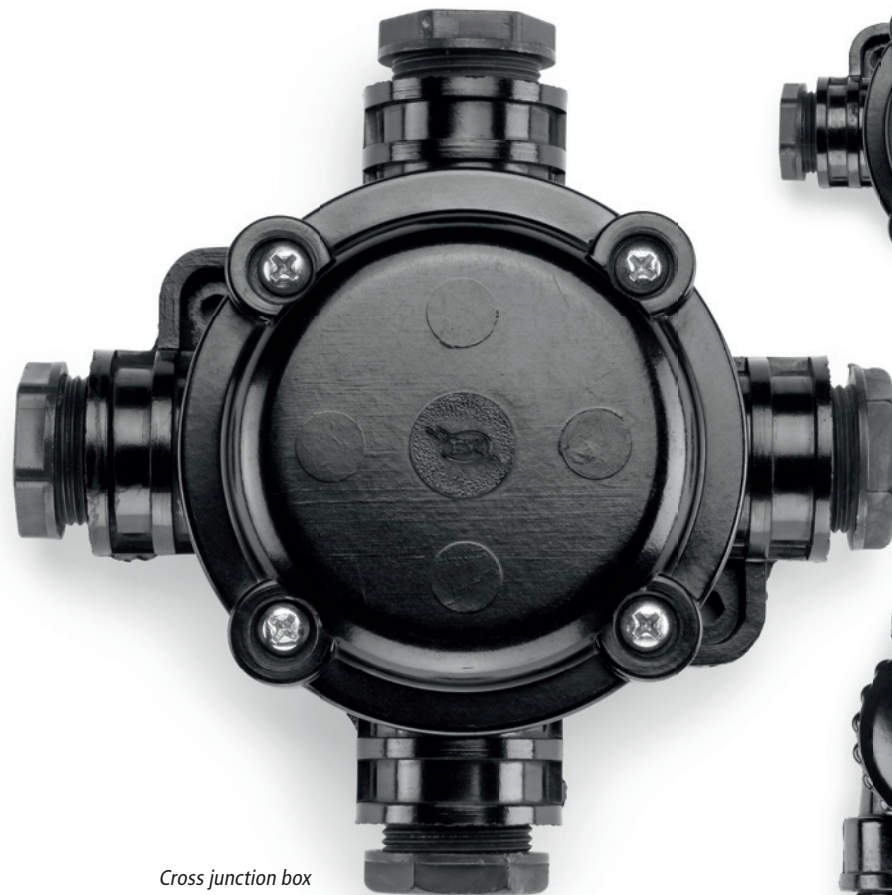
Fortunately, we were able to find the tool for this model, which must surely be more than 60 years old. After undergoing restoration and appropriate VDE testing, this junction box now fills a gap in our surface-mounted range and rounds it out in the most attractive and

also functional design. Bakelite housing in black or white with six knockout entries featuring rubber gaskets for various installation options. AC 400 V. For cables up to 4 x 2.5 mm. Breadth 9.5 cm, length 9.5 cm, height 4.5 cm. Weight: 140 g. IP 44.



Bakelite junction box black
Bakelite junction box white

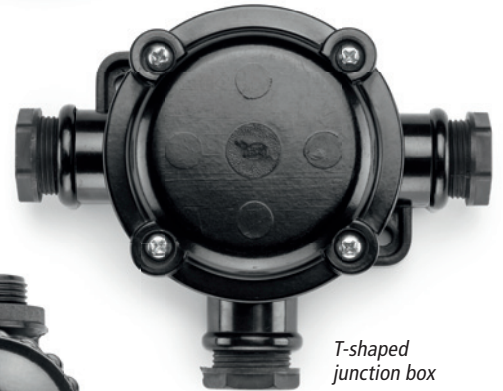
Order no. 100922
Order no. 100923



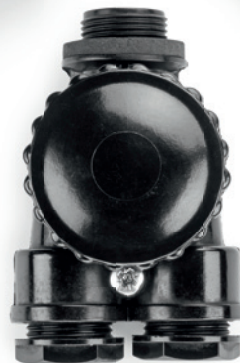
Cross junction box



Pass-through junction box



T-shaped junction box



Twin screw connection

Rarity. Round surface-mounted junction boxes.

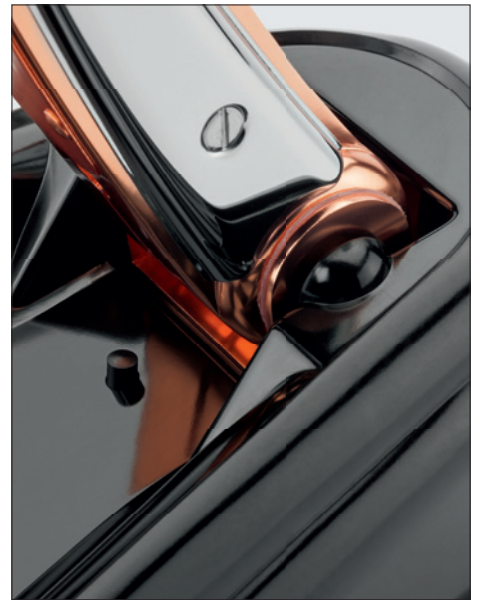
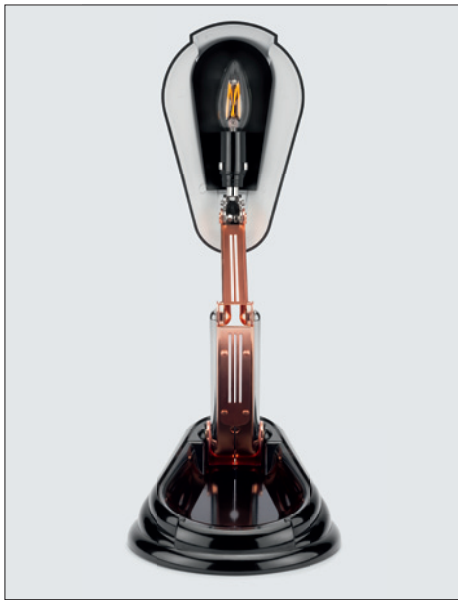
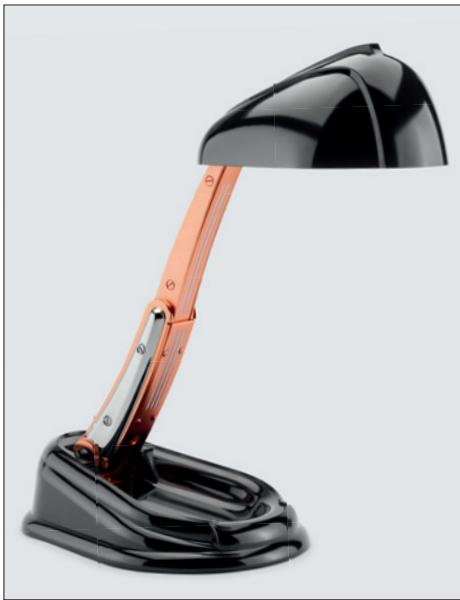
We were able to find the remaining stock of old Bakelite junction boxes and, after some additional research, we also managed to track down their tools from a company formerly based in the Rhineland. The tools for the four models still need to be serviced. We are now offering the remaining stock. The inventories are from an old production run and do not have current VDE testing approval. Depending on your installation needs, you can choose between a cross junction box (four openings), a T-shaped junction box (three openings), a pass-

through junction box (two openings) and a twin screw connection (three openings). The shape of these boxes is highly reminiscent of the well-known Dr. Deisting cable boxes. Length from connection piece to connection piece 13 cm; box lid 8.5 cm Ø; height 4 cm.

Bakelite cross junction box
Bakelite pass-through junction box
Bakelite T-shaped junction box
Bakelite twin screw connection

Order no. 100481
Order no. 100488
Order no. 100483
Order no. 100492





Jumo Bakelite jointed lamp

This lamp is a modern-day take on a classic model, originally designed in France in 1945 by the Société Nouvelle des Etablissements JUMO. The name JUMO is a portmanteau of the founders' surnames, Yves JUjeau and Pierre and Andre MOunique.

The Jumo lamp is absolutely perfect for desk and living-room lighting. Thanks to the versatility of the three-jointed lamp, the lampshade can be set in any position up to a height of 41 cm. The position of the lampshade is also fully adjustable thanks to its joints. The arms and joints are made from brass and guarantee many years of quality lighting. The lamp is assembled by hand and consists of 70 separate parts.

With its high-quality materials, such as the Bakelite housing and brass joints, the robust JUMO lamp weighs in at 1.3 kg. The only change over the original design is for reasons of functionality: the addition of a push-button switch on the base. Now, the lamp does not have to be completely folded down before it can be turned off.

E 14 fixing. Push-button switch on the base. Max. diameter of base: 18.8 cm, adjustable height between 13.6 cm and 41 cm. Max. length of base 28 cm. Weight: 1.3 kg. Integrated cable winder in the base, cable length 2 m.

Jumo Bakelite jointed lamp

Order no. **100478**



British Built to Last I

For more than 70 years (founding year 1941), our Scottish manufacturer has been producing indestructible lamps developed for a wide range of applications. They have been and still are used in industry, mining, the railway and residential construction. We thought they are much too beautiful to be confined to these sectors, however, so we also offer them for private use.



Wall lamp – cast aluminium with swan neck

Wall lamp consisting of a wall rosette, swan-neck arm and lamp body made out of solid cast aluminium. Three screws are used to attach the glass globe with a metal ring to the body of the lamp. The wall rosette, the swan-neck arm and the luminaire with glass are each connected to each other with a screw thread \varnothing 20 mm.

Total height, including the swan-neck arm 33 cm. Total diameter 12 cm. Protrusion 37 cm. Weight 1 kg. E 27 porcelain socket, max. 100 W. IP 65.

Order no. **100508**

Ceiling lamp – cast aluminium with tube

Ceiling lamp consisting of a ceiling rosette, tube and lamp body made out of solid cast aluminium. Three screws are used to attach the glass globe with a metal ring to the body of the lamp. The ceiling rosette, the tube and the luminaire with glass are each connected to each other with a screw thread \varnothing 20 mm.

Total length 44 cm. Total diameter 12 cm. Weight 1.2 kg. E 27 porcelain socket, max. 100 W. IP 65.

Order no. **100510**



Large wall lamp – cast aluminium with swan neck

Wall lamp consisting of a wall rosette, swan-neck arm and lamp body made out of solid cast aluminium. The large reflector with relief made of plastic is attached to the body of the lamp with screws. The wall rosette, the swan-neck arm and the luminaire with glass are each connected to each other with a screw thread Ø 20 mm.

Total height, including the swan-neck arm 40 cm. Total diameter 23 cm. Protrusion 40 cm. Weight 1.3 kg. E 27 porcelain socket, max. 100 W. IP 53.

Order no. 100509



British Built to Last II

Massive wall or ceiling lamp made out of solid cast aluminium and pressed glass with the following impressive dimensions: length 30 cm, height 13.5 cm and breadth 18 cm. Weight 2.1 kg. We offer the lamp in two different versions: natural cast aluminium and cast aluminium painted grey. E 27 porcelain socket, max. 150 W. IP 65.



Large wall lamp cast aluminium

Order no. 100512



Large wall lamp cast aluminium grey

Order no. 100511



Bakelite cellar lamps

We were able to find the tools for these general-purpose lamps that were once used everywhere. They have always been commonly referred to as cellar lamps, and we have decided to stick with the name, even though they can be used for a much wider range of applications. Whether originally found in the cellar, the laundry room, in the attic, on the staircase or in the garage, these lamps have now worked their way up to the kitchen and into the living spaces. The tools, which are more than 70 years old, have been slightly reworked so as to make it possible to continue producing these practical and beautiful lamps.

Hands are more important than machines when it comes to producing these lamps, as the pressing (baking) of the housing alone involves time-consuming manual work. All lamps have a black bakelite housing and a pressed-glass lampshade with wire guard.

Small, oval Bakelite cellar lamp *(Left above picture)*

Length 17 cm, breadth 12.5 cm, height 11.5 cm. Weight 550 g. E 27 porcelain socket, max. 60 W. IP 54. Order no. **100500**

Large, oval Bakelite cellar lamp *(Centric above picture)*

Length 19.5 cm, breadth 13.5 cm, height 11.5 cm. Weight 700 g. E 27 porcelain socket, max. 100 W. IP 54. Order no. **100501**

Round Bakelite cellar lamp *(Right above picture)*

Ø 20 cm, height 10 cm. Weight 1 kg. E 27 porcelain socket, max. 100 W. IP 54. Order no. **100499**



Cellar lamps – cast iron painted grey

The shapes of these models are identical to the Bakelite lamps above, but come in a heavier, even more robust cast-iron design. These lamps have always been used by the federal railway, postal service and other major industrial companies whenever it is necessary for them to

withstand the toughest conditions. All lamps have a grey painted cast iron housing and a pressed-glass lampshade with wire guard.

Small, oval cast iron cellar lamp *(Left picture)*

Length 17 cm, breadth 12.5 cm, height 11.5 cm. Weight 1.3 kg. E 27 porcelain socket, max. 60 W. IP 54. Order no. **100503**

Large, oval cast iron cellar lamp *(Centric picture)*

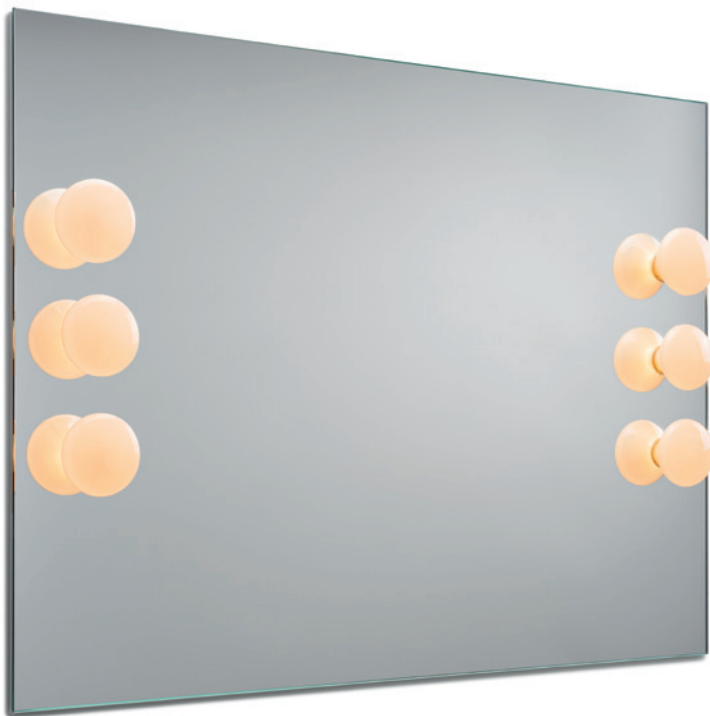
Length 19.5 cm, breadth 13.5 cm, height 11.5 cm. Weight 1.7 kg. E 27 porcelain socket, max. 100 W. IP 54. Order no. **100504**

Round cast iron cellar lamp *(Right picture)*

Ø 20 cm, height 10 cm. Weight 2.3 kg. E 27 porcelain socket, max. 100 W. IP 54. Order no. **100502**

A modern take on a classic bulb – with state-of-the-art LED technology.

We have taken a look at some of Wilhelm Wagenfeld's classic ELDECO bulbs from the 1960s and given them a new lease of life, albeit with one major difference: these new models contain LED technology, bringing 1960s bulb design right up to the state of the art. The light yield and light output are astonishingly sharp and you could almost be convinced you have a "good old-fashioned" bulb installed instead of an LED bulb. The opalescent light in the bulb generates no glare whatsoever, making it perfect for mirror lights and other specialised lighting, among other uses.



Catalogue extract from the company Lindner from 1963.

(left) Examples of use: Eldeco LED light E 14 is perfect for lighting your mirror



ELDECO LED light E 14, 3,5 W
 Opalescent bulb, E 14, energy efficiency class
 A+. 260 lumens, 3,5 W power consumption.
 Average service life 15.000 hours. 220–240
 volts. Dimensions: 82 mm high, 72 mm Ø.
 Not dimmable. Order no. 100931



ELROYAL LED light E 27, 3,5 W
 Opalescent bulb, E 27, energy efficiency class
 A+. 260 lumens, 3,5 W power consumption.
 Average service life 15.000 hours. 220–240
 volts. Dimensions: 107 mm high; 61 mm Ø.
 Not dimmable. Order no. 100932



Thomas Hoof Produktgesellschaft mbH & Co. KG
Zeche Waltrop · Hiberniastr. 6 · D-45731 Waltrop · Tel. +49 (0) 2309 / 951-100 · Fax +49 (0) 2309 / 951-150
info@produktgesellschaft.de · www.produktgesellschaft.de